

KEDGE ANCHOR MARYLAND YACHT CLUB

VOL. IV No. 17

SEPTEMBER 12, 1936

BALTIMORE, MD.

Regatta, Pageant *and* Year Book Number



Star Spangled Banner Regatta, Saturday, September 12, Sunday, September 13

1936



1936

Official Program

PRICE 15 CENTS

HISTORY says that glass was first discovered accidentally by the ancient Phoenicians. There is nothing accidental however in the present large and scientifically conducted glass industry. Constant improvements and developments have so reduced the cost of glass that to-day it is still the most economical and dependable container available for foods.

Insist on

Milk in STERILIZED GLASS BOTTLES

because they are—

Hygienic
Economical
Sturdy
Transparent (you can see the cream line)
Odorless

and—Proven

◆ ◆ ◆
BUCK GLASS COMPANY

*Manufacturer's of Baltimore's Milk Bottles
For More Than A Quarter Century*

BALTIMORE,

● MARYLAND

"See What You Buy"

"Buy In Glass"

**SCHMIDT'S
OLD HOME BREAD**

Made with Unbleached Flour

Sold by All Grocers

SPECIAL NUMBER
of
KEDGE ANCHOR
Official Organ of the Maryland Yacht Club

CONTAINING PROGRAM
of the
STAR SPANGLED BANNER REGATTA
of the
MARYLAND YACHT CLUB
Sponsored by the Maryland Yacht Club Regatta, Inc.

SEPTEMBER 12th and 13th, 1936

CONTAINING SUPPLEMENT TO
YEAR BOOK : FLEET ROSTER :
OFFICERS AND MEMBERS

KEDGE ANCHOR extends to all our guests, officers of the Army, Navy and Coast Guard, and visiting Yachtsmen a cordial welcome to our city and club. We trust that the associations formed will continue to grow through the years to come. We also thank our advertisers who have helped to make this number most interesting and profitable.

THE KEDGE ANCHOR

A LAND AND SEA JOURNAL

VOL. 4

SEPTEMBER, 1936

No. 17

CONTENTS

GREETINGS FROM MAYOR JACKSON	- - - - -	3
GREETINGS FROM COMMODORE CECIL H. BAGLEY	- - - - -	5
EDITOR'S PAGE, OFFICERS AND COMMITTEES OF CLUB	- - - - -	7
THE CHESAPEAKE BAY COUNTRY	- - - - -	9
PROGRAM OF EVENTS	- - - - -	11
THE SPECTACULAR NIGHT PAGEANT	- - - - -	17
GENERAL ORGANIZATION	- - - - -	19
REGATTA ENTERTAINMENT SCHEDULE	- - - - -	23
MEMBERSHIP ROSTER	- - - - -	25
THE FLEET	- - - - -	31
IN APPRECIATION	- - - - -	39

NOTICE

A REGISTRATION and INFORMATION BOOTH

is located on the front porch of the Club house. All visiting yachtsmen are requested to register immediately upon arrival. Mail, telegrams and express matter will be received, forwarded and delivered.

COMMITTEE IN CHARGE

HARRY G. LELAND, *Chairman*

CHESTER WHITE

WILLIAM MARTIN

WILLIAM R. CROWLEY

ROGER HALL

DR. LEGRANDE M. BENNETT

Information may be obtained here regarding Ice, Supplies, Beers, Liquors, etc.



August 31, 1936.

COMMODORE CECIL H. BAGLEY,
MARYLAND YACHT CLUB,
BALTIMORE, MARYLAND.

MY DEAR COMMODORE:

Through the columns of Kedge Anchor, I take pleasure in extending my most cordial greetings to the officers and members of the Maryland Yacht Club on the occasion of the Star Spangled Banner Regatta, September 12 and 13, 1936.

I have been pleased to note the splendid progress made in recent years by the Maryland Yacht Club and the great interest that has been aroused among Baltimoreans in the various events held on the waters of Spring Gardens.

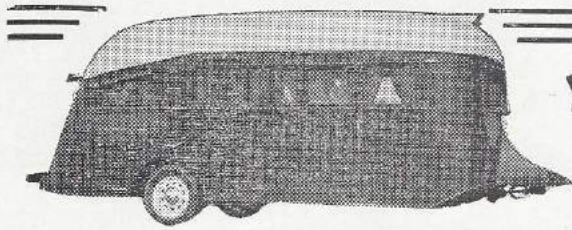
I sincerely trust that the coming hydroplane, inboard, airplane, outboard, cruiser, sail and other contests will be most successful in every way.

Your Club has done much to encourage and conduct water sports in this city, and to educate yachtsmen in advanced nautical matters. Such an organization is not only an asset to a city in time of peace, but prepares members of the club for service in the Navy and Merchant Marine in case of war.

I wish for the Maryland Yacht Club many more years of successful operation.

Yours sincerely,

HOWARD W. JACKSON,
Mayor.



Your automobile
dealer will be glad
to sell you an

Auto-Cruiser House and Camp Trailer

ATTENTION DEALERS

With a minimum of effort on your part you can participate in the sale of Auto Cruiser House and Camp Trailers. Through our liberal dealer plan you need not "floor plan" our product for resale. Investigate today this new idea in automobile trailer merchandising.

300,000 Americans are enjoying new thrills and vacation joys with their house and camp trailers. Statisticians say 200,000 more will take to the highways in trailers this year.

You can be one of these . . . you and your family can experience new pleasures . . . see new sights with an Auto Cruiser house and camp trailer at an undreamed of minimum of expense.

In our files is the record of a 10,000 mile trip taken within the past ten weeks by a Maryland family of three persons at a total cost for food, lodging, car expense and entertainment of slightly more than \$300.00.

Go to your automobile dealer. Let him show you the Auto Cruiser . . . the remarkably comfortable Baltimore-built "homes on wheels."

AUTO-CRUISER SALES CORPORATION

4401 York Road—Baltimore, Md.

Temporary Sales Office

13 East Lee Street Baltimore, Md., South 1111

Auto Cruisers on Display

3925 S. Hanover St.

1533 Mt. Royal Ave.

S. W. Corner St. Paul and Saratoga Sts.

Auto Cruiser furnished Fleet Surgeon through courtesy Auto Cruiser Sales Corporation

AIR CONDITIONED

CAL. 4717 and 0949

SAVOIA RESTAURANT CAFE

FAVA BROS., Props.

Special Spaghetti and Ravioli

ITALIAN FOOD AND SEA FOOD

WINE, BEER AND COCKTAILS

220 & 222 PARK AVE.

BALTIMORE, MD.

MILES RIVER SHIPYARD

Electric Marine Railway

Yacht Service and Rigging

Dry Storage

TELEPHONE 80

ST. MICHAELS, MD.

Schumacher & Foreman, Inc.

COMPLETE OPTICAL SERVICE

Eyes Examined Prescriptions Filled

Over 35 years Serving the Public

Phone, Plaza 5243

209 N. LIBERTY ST.

BALTIMORE, MD.

Compliments of

WILLIAM H. KIRKWOOD, JR.

GREETING

FROM

CECIL H. BAGLEY

Commodore, the Maryland Yacht Club



TO QUOTE FROM that immortal and nautical lyricist of the Gilbert and Sullivan operas, our "bosom swells with pride" to welcome our own and visiting yachtsmen to these historic waters we know and love. And it is in our hearts today that the waves and currents themselves are echoing these words of welcome.

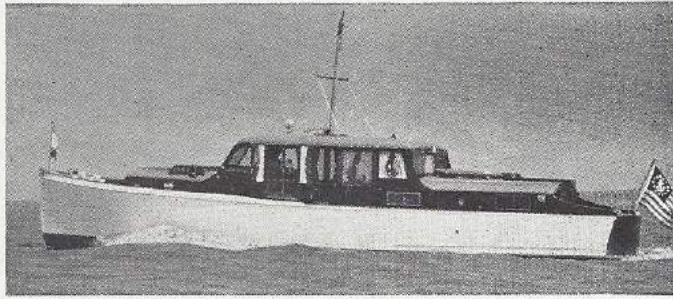
Three centuries and a score of years ago Commodore Christopher Newport turned the prows of his fleet of three little ships between the Capes to flee the rigors of an ocean hurricane. He thus became the first Chesapeake Bay yachtsman.

Since that day in 1607 the Chesapeake and its tributaries have continued to extend an unchanging welcome of broad havens and pleasant shores. And within this shore-line, long enough to reach from Atlantic to Pacific and half-way back again, has been bred a race of sea-going men and women. From them have sprung the naval and yachting traditions of which we are justly proud.

From the terrace of this Club we can see the headland where Francis Scott Key stood on a heaving British deck and wrote the fateful National Anthem. This very regatta, held on Old Defenders' Day, is dedicated to the inspiration of his words.

The picture has changed since the days of Commodore Newport, but not the heart nor spirit of the yachtsman. Whether he heels to a breeze on a beat to wind'ard as green water surges over the lee-rail; or whether he charges with motors roaring to clear a buoy by a whisker; or whether he takes to the air in a seaplane, and touches the waves only now and then like a stormy petrel,—he's a true sea-going yachtsman.

Welcome, yachtsmen, to the Maryland Yacht Club's fall regatta!



MATTHEWS 38'
America's Finest Cruisers

The Morton & Loose Co.

DISTRIBUTORS

10 W. EAGER STREET
BALTIMORE - MARYLAND

MATTHEWS CRUISERS

DODGE BOATS

LYCOMING MARINE ENGINES

FEDERAL MOGUL PROPELLERS

READ WHAT BOATS USING

Regatta Copper Bronze

DO

EDLU--

Winner of 1934 New London to Bermuda Race.

VAMARIE--

First to finish in 1934 New London to Bermuda Race. Winner of 1935 St. Petersburg to Havana Race.

DORADE--

Winner of the Trans-Atlantic Race in 1931; the Fastnet Race, in 1931; Bermuda Race, in 1932 and the Fastnet Race of 1933.

AWEIGH--

Winner of the 1935 Miami to Nassau Race. Second on corrected time in 1935, St. Petersburg-Havana Race. Winner of the 1935 Havana to Key West Race.

Twenty-one of the twenty-nine boats in the 1934 New London to Bermuda Race were painted with REGATTA COPPER BRONZE.

Baltimore Copper Paint Co.

OLIVER REEDER & SON, INC., Props.

BALTIMORE

NEW YORK

The Kedge Anchor

PUBLISHED AT BALTIMORE BY THE
MARYLAND YACHT CLUB

Edward R. Johnston, *Editor*

25 CENTS A COPY—\$2.00 A YEAR
Canadian and Foreign, 30 cents a copy—\$3.00 a Year

Devoted to the interests of the Maryland Yacht Club
sailing, power boating, canoeing and all water sports.

VOL. 4 SEPTEMBER, 1936 No. 17

MARYLAND YACHT CLUB

Broening Park, Baltimore

Curtis 0883-0034

Executive Office

Curtis 0868

Dining Room

Curtis 0882



OFFICERS

COMMODORE

CECIL H. BAGLEY, M.D.

<i>Vice Commodore</i>	C. MARKLAND KELLY
<i>Rear Commodore</i>	LEWIS W. LAKE
<i>Fleet Captain</i>	HAROLD M. CUMMINS
<i>Fleet Surgeon</i>	DR. JAMES W. NELSON
<i>Asst. Fleet Surgeon</i>	DR. SHEPHERD DRAIN
<i>Canoe Captain</i>	HARRY G. THOMPSON
<i>Secretary</i>	W. MORRIS FULLER
<i>Treasurer</i>	LLOYD S. WEITZEL
<i>Measurer</i>	JOHN W. CROWLEY
<i>Measurer</i>	ROBERT W. WAYLAND
CAPTAIN EDWARD R. JOHNSTON	<i>Executive Secretary</i>

GOVERNORS

CECIL H. BAGLEY, M.D., *Chairman*

C. MARKLAND KELLY	W. MORRIS FULLER
HAROLD M. CUMMINS	RICHARD F. LANE
CHARLES P. RECKNER	O. L. TIEDEMAN
LLOYD S. WEITZEL	EDWIN F. SHRIVER
HARRY G. THOMPSON	DAVID L. ELLIOTT
A. H. REIPSCHNEIDER	C. GRECHT
LEWIS W. LAKE	W. TILGHMAN HEMSLEY

ENTERTAINMENT

A. H. REIPSCHNEIDER, *Chairman*

WILSON WINBIGLER	HENRY F. HUBER
JESSE C. COPPEDGE	EDWIN F. SHRIVER
WM. H. KIRKWOOD	H. V. LUCAS
JAMES E. VAN EVERA	A. F. SNYDER
HERBERT W. QUARTLEY	

REGATTA

CHARLES P. RECKNER, *Chairman*

ROLAND GEARY	C. L. WALKER
HARVEY E. REANY	H. O. BIXBY
GEORGE W. RAPPLEYEA	GEORGE F. FLENTJE

MEMBERSHIP

COM. W. TILGHMAN HEMSLEY, *Chairman*

JAMES I. CROUT	HOWARD O. JENKINS
ASHLEY R. MILLER	WALTER R. BOEHME

DINING ROOM

RICHARD F. LANE, *Chairman*

HAROLD M. CUMMINS	DR. J. THOMAS NELSON
-------------------	----------------------

REVISION CONSTITUTION

VICE COM. C. MARKLAND KELLY, *Chairman*

W. TILGHMAN HEMSLEY	C. GRECHT
MYER ROSENBUCH	

HONORARY MEMBERS

Ex Officio

The President of the United States
The Secretary of the Navy
The Secretary of War
The Governor of the State of Maryland
The Secretary of the State of Maryland
The Attorney General of the State of Maryland
The Mayor of the City of Baltimore

CHESAPEAKE AND POTOMAC SECTION of the American Power Boat Association, Chartered October 29, 1925

THE CHESAPEAKE & POTOMAC POWER BOAT ASSO.	Washington, D.C.
CORINTHIAN YACHT CLUB	Baltimore, Md.
CORINTHIAN YACHT CLUB	Washington, D.C.
EASTERN POWER BOAT CLUB	Washington, D.C.
HAMPTON YACHT CLUB	Hampton, Va.
HAVRE DE GRACE YACHT CLUB	Havre de Grace, Md.
HERALD HARBOR YACHT CLUB	Herald Harbor, Md.
GIBSON ISLAND YACHT SQUADRON	Gibson Island, Md.
MARYLAND YACHT CLUB	Baltimore, Md.
MARYLAND YACHT RACING ASSOCIATION	Annapolis, Md.
MILES RIVER YACHT CLUB	St. Michaels, Md.
NORFOLK COUNTRY CLUB	Norfolk, Va.
NORTH EAST RIVER YACHT CLUB	North East, Md.
TRI-STATE YACHT CLUB	Essington, Pa.
CAPTAIN EDWARD R. JOHNSTON, <i>Secretary and Treasurer</i> c-o Maryland Yacht Club, Baltimore, Md.	

PATAPSCO SQUADRON

of the United States Power Squadrons

GEORGE F. FLENTJE, JR., <i>Commander</i>
GEORGE W. RAPPLEYEA, <i>Lieutenant Commander</i>
CAPTAIN EDWARD R. JOHNSTON, <i>Secretary</i>
COMMODORE W. S. LYDECKER, <i>Treasurer</i>

Buy Your 1937 PLAYMATE Today
 NEW 39 ft. LOUNGING SEDAN
\$5890

Super  *Luxury*

A FEW NEW FEATURES

Chromium Fittings
 Tiled Toilet
 Bakelite Chart Rack

Dining Nook
 Advanced Ventilation
 Vee Windshield
 Perfect Vision

Forward Cockpit
 Mahogany Hull
 Advanced Bulwalks

Complete line of new Cruisers, Diesel Yachts, Sport Fisherman, Sea Skiffs
 23 FT. 56 FT.

WHEELER SHIPYARD Inc., FOOT OF CROPSY AVE.
 BROOKLYN, N. Y.

GEO. W. RAPPLEYEA, 2514 HARFORD RD., UNIVERSITY 2343

Sales Reconditioned Used Boats Terms Service

Compliments of
WILLIAM S. GORDY, JR.

Compliments of the
 Wm. H. Whiting Company

Compliments of the
 ASSOCIATION
 — OF —
 MARYLAND PILOTS

Captain B. R. Wysong, Pres.

"Safety Is Our Motto"

**Diamond and
 Domino Cabs**

Calvert 6050

The Chesapeake Bay Country

By John W. Crowley

From the earliest settlement of our country, gifted men have written books and articles to express their appreciation of the charming bay, the country and its inhabitants.

Nowhere has nature given with such a lavish hand of equable climate, productive land and pleasant surroundings.

Added to this, the Anglo Saxon traditions of the early settlers made it a good place for men to live. These traditions still survive.

Situated where most of the formative drama of our unique civilization was enacted, made a living inspiration by the acts of the great leaders who were born or won their greatest achievement on its shores or waters. It is a never failing source of material for the historian and for the renewal of our patriotism.

As a cruising ground for the yachtsman, the climate, the numerous broad rivers, bays and creeks

provide ideal conditions for sport and relaxation. If he wishes to test the speed of his yacht or his skill as a helmsman he will find ample opportunity to do so. The sportsman will find exercise for his skill in luring the finny tribe or testing his aim and endurance in coping with game birds and water-fowl.

If a nature lover his soul will be expended by the sights which unfold before him as he travels up the numerous bays and rivers—everywhere there are new and delightful vistas and a variety of everything which appeals to him. The towns situated on the numerous rivers have supplies of all the requirements of the yachtsman and his boat. The inhabitants will be found to be excellent human beings whom it is a pleasure to know.

So we of the Maryland Yacht Club express our own appreciation of this grand gift of nature and suggest to all those who have not availed themselves of its facilities to do so.

COME TO THE CHESAPEAKE COUNTRY AND BE REJUVENATED.

BALTIMORE

Biggest Bonding Companies

Abundant Skilled Labor

Large Jobbing Houses

Trust Companies and Banks

Ideal Water Fronts

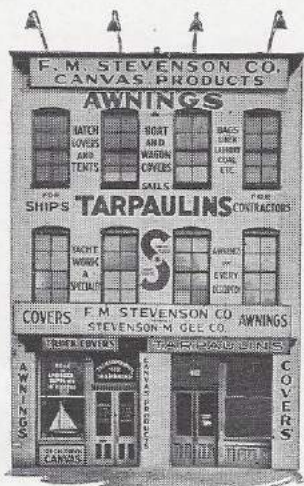
Municipal Dock Facilities

Ocean Steamers and Coast Liners

Railroad Facilities Unsurpassed

Electric Power for Factories

Compliments of



412 E. Pratt St.

PLaza 5667

Sail-Maker

Owner Sloop Dowitcher

Club Member

You are invited

to visit

WAHAB VILLAGE

on the

ISLE OF OCRACOKE

NORTH CAROLINA

on the Route to

FLORIDA

Via Inland Waterway

Excellent Hunting - Fishing

For further information

apply

R. S. WAHAB

Member Maryland Yacht Club

DRINK



Budweiser

KING OF BOTTLED BEER

NOW IN CANS TOO



ANHEUSER-BUSCH, INC.

650 W. Pratt Street

PLAZA 2965

GET THEM AT THE TAP ROOM - CARRY THEM ON YOUR BOAT

No Deposits to pay — No empties to bother about

Piel's Beer in stubby bottles Ballantine's Ale in cans

Knapp Distributing Company

Wolfe 0441

2418 E. NORTH AVE.

Program of Events of the Star Spangled Banner Regatta

September 12th and 13th, 1936

HELD ANNUALLY BY

THE MARYLAND YACHT CLUB

SPONSORED BY

MARYLAND YACHT CLUB REGATTA, INC.

COMMODORE CECIL H. BAGLEY, M.D., *Chairman Ex Officio*

COMMODORE W. TILGHMAN HEMSLEY, *General Chairman*

CHAS. P. RECKNER, *Chairman Regatta*

CAPTAIN EDWARD R. JOHNSTON, *Executive Secretary*

INFORMATION

COURSE	One mile and two-thirds; Maryland Yacht Club Water Stadium. All heats will consist of three laps, five miles.
ENTRY BLANKS	May be obtained from Charles F. Chapman, 959 Eighth Ave., New York—Captain Edward R. Johnston, c/o Maryland Yacht Club.
SANCTIONED	American Power Boat Association.
REGISTRATION	Maryland Yacht Club, Broening Park, Baltimore, Md.
RULES	A. P. B. A. & N. O. A. Racing Rules 1936.
INSPECTION	Inboards—Contestants must present registration Certificate of Race Commission at time of Registration. Outboards—Regular Inspection by A. P. B. A. Inspector.
MUFFLERS	Not required.
FUEL & OIL	Available at the Pits.
TIME	Eastern Standard Time.
ENTRY FEE	None required.
RACE	Maryland Yacht Club—Dressing Room, Showers, First Aid, etc.
HEADQUARTERS	available for all contestants. Pit crew to help with boats. Derrick facilities available for inboards.
SAIL RACES	For information on Sail Races see O. L. Tiedeman, Chairman Sail Race Committee, or Robt. W. Wayland, Measurer.

PRIZES

CASH PRIZES FOR PROFESSIONAL OUTBOARD WINNERS
OR TROPHIES OF EQUIVALENT VALUE FOR AMATEUR
OUTBOARD WINNERS.

ALL OUTBOARD RACES WILL BE RUN AS OPEN EVENTS.

Prizes will be awarded for all first, second and third winners where there are five or more boats starting an event.

Memorandum

P R I Z E S

OUTBOARD	First Heat			Second Heat		
	1st	2nd	3rd	1st	2nd	3rd
Class A.....	\$25.00	\$15.00	\$10.00	\$25.00	\$15.00	\$10.00
Class B.....	25.00	15.00	10.00	25.00	15.00	10.00
Class C.....	25.00	15.00	10.00	25.00	15.00	10.00
Unlimited	25.00	15.00	10.00			
Outboard Runabouts.....	25.00	15.00	10.00			
		First place		Second place		Third place
Midget Class.....		Trophy		Trophy		Trophy

INBOARDS

91-135 Cubic Inch Class.....	First place Trophy	Second place "	Third place "
225 Cubic Inch Class.....	News-Post Trophy	Trophy	Trophy
Inboard Runabouts A, B, C & D.....	"	"	"
Inboard Runabouts Class E, F & G.....	"	"	"
Inboard Free for all.....	"	"	"
Cruiser Race	"	"	"
Night Pageant	"	"	"

SAIL BOAT RACING

Racing Class	Trophy	Trophy	Trophy
Cruising Class	M.Y.C. perpetual Trophy	"	"
Star Class	"	"	"
Log Canoes	"	"	"
Albatross'	"	"	"
Snipes	"	"	"
Comets	"	"	"
20 foot and under.....	"	"	"
Ladies' Moth	"	"	"
Men's Moth	"	"	"
Ladies' Snipe	"	"	"

Memorandum

**The 135 Class Races are for the National Interstate
Championship Trophy.**

**The International Greening-Duff Trophy will be awarded
for the fastest heat in the 225 Class Race.**

TENTATIVE SCHEDULE OF POWER BOAT EVENTS

Saturday, September 12th

Event No.	1	12 noon	Arrival Seaplanes	
	2	1.00 p.m.	Flag Raising of American and Canadian Flags.	
	3	1.40 p.m.	225 Cubic Inch Class.....	First heat
	4	2.00 p.m.	91-135 Cubic Inch Class.....	First heat
	5	2.20 p.m.	E, F & G Runabouts.....	First heat
	6	2.40 p.m.	225 Cubic Inch Class.....	Second heat
	7	3.00 p.m.	91-135 Cubic Inch Class.....	Second heat
	8	3.20 p.m.	E, F & G Class Runabouts.....	Second heat
	9	3.40 p.m.	225 Cubic Inch Class.....	Final heat
	10	4.00 p.m.	E, F & G Runabouts.....	Final heat
	11	4.20 p.m.	91-135 Cubic Inch Class.....	Final heat
	12	4.40 p.m.	Air Race	

Sunday, September 13th

	1	11.30 a.m.	Air Race	
	2	12 noon	Outboard Midget Class.....	Final heat
	3	12.20 p.m.	Class A.....	First heat
	4	12.40 p.m.	Class A.....	Final heat
	5	1.00 p.m.	Class C.....	First heat
	6	1.20 p.m.	Class C.....	Final heat
	7	1.40 p.m.	Class B.....	First heat
	8	2.00 p.m.	Class B.....	Final heat
	9	2.20 p.m.	Unlimited Outboards.....	Final heat
	10	2.40 p.m.	Outboard Runabouts.....	Final heat
	11	3.00 p.m.	A, B, C & D Runabouts.....	First heat
	12	3.20 p.m.	Inboard Free for all.....	First heat
	13	3.40 p.m.	A, B, C & D Runabouts.....	Final heat
	14	4.00 p.m.	Inboard Free for all.....	Final heat
	15	4.30 p.m.	Seaplane take-off Maneuvers	
	16	5.30 p.m.	Cruiser Race	

SCHEDULE OF SAIL EVENTS

Sunday, September 13th

Event No.	1	9.45 a.m.	Racing Class
	2	10.00 a.m.	Cruising Class
	3	10.15 a.m.	Star Class
	4	10.30 a.m.	Log Canoe
	5	10.45 a.m.	Albatross'
	6	11.00 a.m.	Snipe Class Men
	7	11.15 a.m.	Comet Class
	8	11.30 a.m.	20 foot and under
	9	11.45 a.m.	Ladies' Moth Class
	10	2.30 p.m.	Men's Moth Class
	11	2.45 p.m.	Snipe Class Ladies'

COMPLETE PHOTOGRAPHIC SUPPLIES AND SERVICE

ZEPP
PHOTO
SUPPLY
COMPANY

Established 1900

3044 GREENMOUNT AVENUE
Open Evenings
BALTIMORE ♦ MARYLAND

THE
EMPIRE CONSTRUCTION
COMPANY

Baltimore, - Maryland



Waterfront Construction

UNGER & MAHON



Marine Railways

Yacht Repairs

Compliments of

A Friend

The Spectacular Night Pageant

By W. Vion Masson

As usual we will hold a Marine Pageant of Illuminated and Decorated yachts in connection with our Star Spangled Banner Regatta, but in place of the last day it will be held on the evening of the first day of the Regatta "September 12th, 1936 at 8 P.M."

The yachts entering the pageant will be divided into three classes, "C" 16 ft. to 25 ft, "B" 25 ft. to 40 ft. and "A" 40 ft. and over.

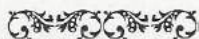
Three handsome trophies and 9 prizes have been donated by some of our leading citizens to be presented to the yachts showing the most uniqueness, originality and beauty in their decorative designs.

Five Judges, "Army, Navy, Coast Guard and Art Societies" have been selected to make the awards.

The pageant will move promptly at 8 P.M. and can be seen to advantage from Broening Park, Hanover St. Bridge, Fort McHenry, Port Covington and Western Maryland Piers.

In keeping with our slogan, "Star Spangled Banner Regatta" the U. S. Army, 3rd Corps Area, will raise our country's flag on Fort McHenry and fire a salute of 21 guns and a flood light will be flashed on the flag. The base of the flag mast will be surrounded by red flares as will also the Club Grounds and Ferry Bar, so do not miss it.

**Beer of Distinction and
Quality is Brewed in
Baltimore**



American Brewery, Inc.
The Bruton Brewing Company
Free State Brewery Corporation
Globe Brewery
Gunther Brewing Company, Inc.
National Brewing Company
Theodore Reichart, Inc.

DRINK

PHILLIPS BROTHERS

CHAMPION GINGER ALE

Founded 1782

WASHINGTON COLLEGE

One Hundred and Fifty-Fifth Year

History - Tradition - Vision - Service

An Old College for a New Day

Opens Sept. 16, 1936

Gilbert W. Mead, Litt. D., LL.D., *President*

CHESTERTOWN, MD.

Chesapeake Boat Co., Inc.

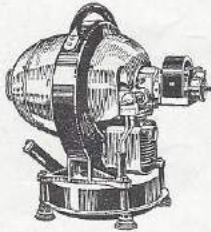
Yacht Repairs and Inside Storage

Chesapeake City 56

Chesapeake City, Md.

WOOD PATTERN MAKING AND SMALL BOATS
BUILT TO ORDER

Summer Wharfage by the Month or Season



HOMELITE MACHINE and CHAMPION BATTERY

32-volts, 80-ampere hours
Battery will burn ten 25-watt
lamps for 10 hours on a charge
Come In and See One Work
Marine Electrical Work for
Twenty-Five Years

Hector MacRae 17 East 21st St.

BALTIMORE

Correctness in
every detail of
our Garments

Makers of the
Official Maryland
Yacht Club Cap



*Yachting Clothes for the Owner, Officers and Crew
for all occasions.*

J. GLICKMAN & SON

145-147 MAIN ST.

Annapolis, Md.

Phone or Write for Representative Phone Annapolis 948

VALSPAR

Paint and Varnishes

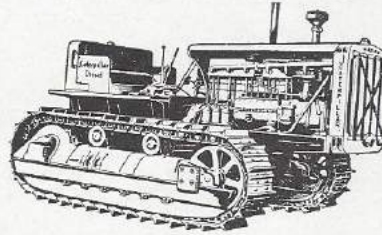
BUDEKE'S

OUR 68th YEAR OF
FAITHFUL SERVICE

418 S. BROADWAY
Baltimore, Md.

Telephone Belmont 7777-7778

Alban Tractor Company, Inc.



Deisel
and
Gasoline
Tractors
and
Equipment

Caterpillar

Reg. U. S. Pat. Off.

725 East 25th Street

Baltimore, Md.

Phone, Calvert 3325

"Quality Service"

A. L. ROBERTSON CO.

SAIL MAKERS

Yacht Covers - Sails - Awnings - Tents

Results Not Excuses

118 S. FREDERICK ST.,
Baltimore, Md.

Compliments of Friends

No. 28

Compliments of

YORK SAFE AND LOCK CO.

7 WEST REDWOOD ST.

Baltimore, Md.

GENERAL ORGANIZATION

HONORARY CHAIRMEN

HON. HARRY W. NICE, *Governor of Maryland*
HON. HOWARD W. JACKSON, *Mayor of Baltimore*
MAJOR GENERAL A. J. BOWLEY, *U. S. Army*
REAR ADMIRAL DAVID FOOTE SELLERS, *U. S. Navy*
CAPTAIN H. G. FISHER, *U. S. Coast Guard*

EXECUTIVE COMMITTEE

COMMODORE CECIL H. BAGLEY, *Chairman Ex Officio*
FORMER COMMODORE W. TILGHMAN HEMSLEY, *General Chairman*
CHARLES P. RECKNER
VICE COMMODORE C. MARKLAND KELLY
REAR COMMODORE LEWIS W. LAKE
CAPTAIN EDWARD R. JOHNSTON
A. B. CHIVERS
FORMER COMMODORE CHAS. A. CUMMINS
FORMER COMMODORE WM. E. LAMBLE

ADVISORY COMMITTEE

CAPTAIN HAROLD M. CUMMINS, *Chairman*

MAJOR WILLIAM E. HOKE
WILSON LOMAX

COMMANDER CLARENCE L. WALKER
JAMES LOBELL

FINANCE COMMITTEE

LLOYD S. WEITZEL, *Chairman*

W. MORRIS FULLER
FORMER COMMODORE W. TILGHMAN HEMSLEY

FORMER COMMODORE CHRISTIAN GRECHT
FORMER COMMODORE ALLAN C. DAVIS

REGATTA COMMITTEE

CHARLES P. RECKNER, *Chairman*

O. L. TIEDEMAN, *Assistant Chairman*

COMMODORE CECIL H. BAGLEY, M.D.
VICE COMMODORE C. MARKLAND KELLY
REAR COMMODORE LEWIS W. LAKE
FLEET CAPTAIN HAROLD M. CUMMINS

FORMER COMMODORE W. TILGHMAN HEMSLEY
LLOYD S. WEITZEL
A. B. CHIVERS
A. H. REIFSCHNEIDER

POWER BOAT RACE COMMITTEE

CAPTAIN HARRY G. THOMPSON, *Chairman*

ROBERT STEVENS
HARRIS BROOKS

STEPHEN SETH

SAIL BOAT RACE COMMITTEE

O. L. TIEDEMAN, *Chairman*

STANLEY TROTT
CHARLES WALLACE
EDWARD SHIPLEY
FRED. KLAPPROTH

ROBERT WAYLAND
WILLIAM BERTALLAN
HARRY M. SACHS

TROPHY COMMITTEE

JOHN CHARLES THOMAS, *Honorary Chairman*
A. H. REIFSCHNEIDER, *Chairman*

W. MORRIS FULLER
W. VION MASSON

OTTO L. TIEDEMAN

ENTERTAINMENT COMMITTEE

A. H. REIFSCHNEIDER, *Chairman*

JESSE COPPEDGE
J. WILLIAM FETTER
WILLIAM H. KIRKWOOD, JR.
CAPTAIN EDWIN F. SHRIVER
DR. JOSEPH NELSON

BRUCE C. SIMPSON
ALFRED SNYDER
JAMES E. VAN EVERA
WILSON WINBIGLER

PUBLICITY COMMITTEE

DAVID ELLIOTT, *Chairman*

A. B. CHIVERS
EDWARD D. BECKER

LOWERY COOLING
PETER CHAMBLISS

COMMUNICATION COMMITTEE

CAPTAIN EDWIN F. SHRIVER, *Chairman*
MAHLON H. HAINES

FIRST AID COMMITTEE

FLEET SURGEON DR. JAMES W. NELSON, *Chairman*

DR. SHEPHERD DRAIN
DR. H. R. LICKLE
DR. C. B. WHELTLE
DR. LEGRANDE M. BENNETT
DR. J. W. THOMAS

DR. WILLIAM B. SETTLE
DR. CHARLES B. ENSOR
DR. HENRY F. BUETTNER
DR. JOSEPH NELSON

AIR RACE COMMITTEE

JACK RUTHERFORD, *Honorary Chairman*
FRANK SCHENUIT, *Chairman*

LT. COL. W. D. TIPTON
HOWARD KELLY

CHARLES THOMPSON
DR. H. SCHEONRICH

INFORMATION AND REGISTRATION

HARRY G. LELAND, *Chairman*

CHESTER WHITE
WILLIAM MARTIN
WILLIAM R. CROWLEY

ROGER HALL
DR. LEGRANDE M. BENNETT

PROGRAM COMMITTEE

CAPTAIN EDWARD R. JOHNSTON, *Chairman*

PAGEANT COMMITTEE

CAPTAIN W. VION MASSON, *Chairman*

J. B. SWEENEY
WILLIAM R. BAKER
REESE DIETRICH
CHARLES REIGNER

PETER CHAMBLISS
LOWERY COOLING
G. H. WARD
CURTIS ELLIOTT

HOUSING COMMITTEE

EDWARD E. WARREN, *Chairman*

HOWARD O. JENKINS

J. C. BENNETT

GENERAL RECEPTION COMMITTEE

HONORABLE HOWARD W. JACKSON, *Honorary Chairman*
D. MEREDITH REESE, *Chairman*

RICHARD M. BAKER
VICE COMMODORE C. MARKLAND KELLY
DR. DAVID W. JONES
J. V. KELLY
JOHN B. BAKER
HENRY E. BLAKE
CAPTAIN H. O. BIXBY
WILSON J. CARROLL
JESSE COPPEDGE
DR. SHEPHERD DRAIN
COMMODORE CHRISTIAN GRECHT
WALTER R. HOUGH
G. PORTER HOUSTON
COMMODORE FRED'K A. GEORGE
WILLIAM H. KIRKWOOD, JR.
HARRY G. LELAND
DR. JAMES W. NELSON
A. H. REIFSCHEIDER
WILLIAM F. SHINNICK
J. WILLIAM STRUVEN, SR.
ROBERT WAHAB

HON. J. BERNARD WELLS
JOHN P. BRANDAU
EDWARD HANLON
GEORGE L. NICHOLS
F. A. ALLNER
WILLIAM F. BAKER
HOLLIS F. BENNETT
H. L. COOLING
JAMES I. CROUT
CAPTAIN JOHN S. DELANO
REAR COMMODORE JUSTUS DUNOTT
CAPTAIN GEORGE S. HOKE
HENRY F. HUBER
COMMODORE WILLIAM E. LAMBLE
DR. OSCAR W. LUSBY
DR. J. THOMAS NELSON, JR.
GEORGE SELLMAYER
ROBERT STEVENS
J. WILLIAM STRUVEN, JR.
GEORGE H. WATERS
CHESTER G. WHITE

LADIES' RECEPTION COMMITTEE

Mrs. D. MEREDITH REESE, *Chairman*

MRS. CHARLES P. RECKNER
MRS. HAROLD M. CUMMINS
MRS. LLOYD S. WEITZEL
MRS. RICHARD F. LANE
MRS. WILLIAM H. KIRKWOOD
MRS. C. W. MILOSH
MRS. EDWARD R. JOHNSTON
MRS. WILLIAM E. BAKER
MRS. W. S. FAUNCE
MRS. BRUCE SIMPSON
MRS. JAMES E. VAN EVERA
MRS. CURTIS ELLIOTT
MRS. WALTER R. HOUGH
MRS. LEWIS W. LAKE
MRS. W. MORRIS FULLER
MRS. HARRY G. THOMPSON
MRS. FRED'K A. GEORGE
MRS. CHRISTIAN GRECHT
MRS. J. V. LOBELL
MRS. CHARLES W. MILLER
MRS. ELIZABETH BOONE
MRS. J. THOMAS NELSON
MRS. A. H. REIFSCHEIDER
MRS. RANDOLPH THOMAS

MRS. WALLACE KEMP
MRS. W. S. LYDECKER
MRS. JOHN C. BENNETT
MRS. CLAUDE WARNER
MRS. EDWARD E. WARREN
MRS. JAMES JENSEN
MRS. WALTER THOMAS
MRS. WILLIAM BERTALAN
MRS. WILLIAM F. SHINNICK
MRS. WALTER BOEHME
MRS. SHEPHERD DRAIN
MRS. E. B. BOBZIEN
MISS MARION NEALY
MRS. HOWARD O. JENKINS
MRS. WILLIAM E. LAMBLE
MRS. CLARENCE L. WALKER
MRS. H. O. BIXBY
MRS. JESSE COPPEDGE
MRS. ROBERT WAHAB
MRS. GEORGE W. RAPPLEYEA
MRS. J. WILLIAM FETTER
MRS. GEORGE KURTS
MRS. WILLIAM E. HOKE
MISS VIRGINIA NOLAN

MEASURERS

JOHN W. CROWLEY
ROBERT WAYLAND

ROLAND GEARY

MARINE COMMITTEE

COMMODORE FREDERICK M. KIPP, JR., *Chairman*
HOWARD MORGAN

POLICE COMMITTEE

GENERAL CHARLES D. GAITHER, *Honorary Chairman*
CAPTAIN HAROLD M. CUMMINS, *Chairman*

OUTBOARD COMMITTEE

COMMANDER GEORGE FLENTJE, JR., *Chairman*

FIRE PREVENTION COMMITTEE

ALBERT E. SHARP, *Honorary Chairman*
THOMAS MEUSHAW, *Chairman*

DINING ROOM COMMITTEE

RICHARD F. LANE, *Chairman*
DR. JOSEPH NELSON
HOWARD O. JENKINS

BROADCASTING COMMITTEE

E. J. SPENCE, *Honorary Chairman*
J. WILLIAM FETTER, *Chairman*
H. V. LUCAS

ANCHORAGE COMMITTEE

CAPTAIN WALTER R. BOEHME, *Chairman*
MILTON GEISEN
CURTIS ELLIOTT

RACE PATROL

WILLIAM F. SHINNICK, *Chairman*
A. L. HUBBARD, JR.
J. WILLIAM STRUVEN, JR.

WATER TRANSPORTATION

WILLIAM MARSHECK, *Chairman*
ARTHUR CROWLEY
FREDERICK KLEIN

SEA SCOUT COMMITTEE

CAPTAIN J. D. MACBRIDE

SEA PLANE ANCHORAGE COMMITTEE

GEORGE W. NORWOOD, *Chairman*
JAMES JENSEN

JUDGES

COMMODORE CHARLES F. CHAPMAN, *Honorary Chairman*
and Referee
HARVEY E. REANEY
COMMANDER JACK ANNADALE
COMMANDER GORDON LEACH
COMMODORE BARTOL SILVER
COMMODORE FREDERICK HOFFMAN
COMMODORE WILLIAM SHELTON
FREDERICK MCGOWAN
E. JEFFERSON
LOUIS PAILER
MILTON ROSE
M. BUJAL
COMMODORE JOHN REMON



WESTINGHOUSE
AIR CONDITIONING

WALLACE STEBBINS & SONS INC.

Charles and Lombard Sts., Baltimore

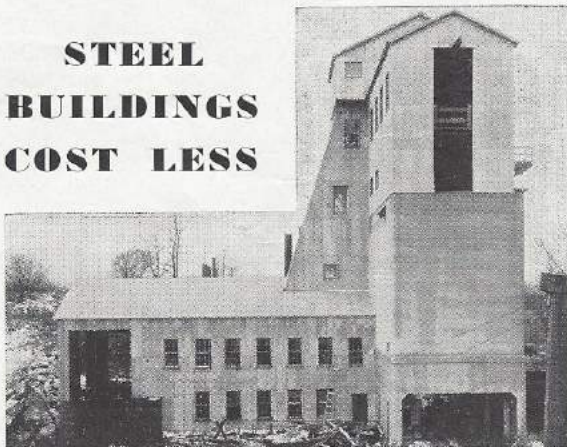
*Heating, Piping and Air Conditioning
Contractors*

Jobbers:

Pipe, Valves, Fittings and Equipment

Over 50 years in Baltimore

**STEEL
BUILDINGS
COST LESS**



Most practical answer to industry's present-day building needs . . . modern sectional steel buildings. Adaptable to any plant requirement. Designed in strict accordance with American Institute of Steel Construction specifications. Insulated if desired. Rigid, weather-tight, long-life construction. Costs much less than buildings of brick or concrete, but gives comparable service plus the decided advantages of quick erection, easy enlargement or economical relocation when necessary. Get the facts about these modern steel structures.

MARYLAND METAL BUILDING COMPANY

RACE and McCOMAS STS. - BALTIMORE, MD.

American Hammered Piston Rings

IN EVERY SIZE — OF EVERY
TYPE
FOR EVERY PURPOSE

Marine Representative

A. PRESTON PETRE

608 STEWART BUILDING, Baltimore, Md.

Phone, Plaza 6251

E. S. BRADY & CO.

Anthracite COAL Bituminous
Fuel Oil Burners Fuel Oil

Remember: Brady's Burns Better

Madison 0529

Monroe & Laurens Sts.



OWEN YACHTS

Annapolis, Maryland

*Inspect our new low priced Deck Cabin
Sedan*

Membership Roster of the MARYLAND YACHT CLUB



HONORARY MEMBERS

GEORGE M. ARMOR
RICHARD M. BAKER
JOHN P. BRANDAU
HON. WILLIAM F. BROENING
A. B. CHIVERS
GEORGE W. CAMERON
COL. E. J. DENT, U.S.A.
ROBERT E. DUNN
EDWIN A. FITZPATRICK
HON. R. WALTER GRAHAM
COL. FRANK A. HANCOCK
EDWARD HANLON
WALTER R. HOUGH
HON. HOWARD W. JACKSON

DR. DAVID W. JONES
J. V. KELLY
VICE COMM. C. MARKLAND KELLY
COMMODORE F. W. KIPP, JR.
ADAM H. KROMM
L. GORDON LEECH
WILLIAM H. MEESE
HON. LEE S. MEYER
GOVERNOR HARRY W. NICE
GEORGE L. NICHOLS
W. C. SHELTON
SENATOR WILLIAM I. NORRIS
REAR ADMIRAL DAVID F. SELLERS
MAJOR J. PURDON WRIGHT

DISTINGUISHED LIFE MEMBERS

LIEUTENANT WALTER E. HAWKINS
COMMODORE W. TILGHMAN HEMSLEY
CAPTAIN EDWARD R. JOHNSTON
CAPTAIN RICHARD F. LANE

VICE COMMODORE W. S. LYDECKER
COMMODORE MYER ROSENBUSH
COMMODORE JOSEPH A. VAETH

LIFE MEMBERS

HARRY G. LELAND

MEMBERS

F. A. ALLNER
MARTIN S. ALVEY
ARTHUR D. ANDERSON
J. B. ANDERSON
ROBERT ANDERSON
HUGH ANDREWS
W. C. ATKINSON
LIONEL ATWILL
DAVID BACHARACK
THEODORE BACHMAN
COMMODORE CECIL H. BAGLEY
JOHN B. BAKER
WM. F. BAKER
ROBERT BARBOUR
GEORGE A. BARNHART
JEROME C. BAUM
EUGENE H. BEER
HOLLIS F. BENNETT
DR. LeGRAND M. BENNETT
HAROLD O. BERRYMAN
WILLIAM BERTALAN
CHARLES E. BICHEL
HARVEY S. BICKEL
CAPTAIN H. O. BIXBY
WINFIELD S. BLACK
HENRY E. BLAKE
GEORGE HARTMAN BLAMBERG
ARTHUR J. BLATCHLEY
EDWARD I. BLUM
CAPTAIN EDWIN B. BOBZIEN
W. R. BOEHME
EDWARD D. BOOZ
EDWARD THOMAS BRACKEN
JOHN W. BRAMBLE
E. J. BRAY
HARRIS C. BROOKS
DONALDSON BROWN
HENRY F. BUETTNER
WILSON J. CARROLL
WILMER A. CASKEY
GEORGE R. CHARLES
ERNEST T. CHASE
HARRY R. CHRISTOPHER
C. EDWIN CLARKE
NORMAND A. CLARKE
BARRON G. COLLIER
THEODORE COOKE, JR.
W. LAYTON COOPER
JESSE COPPEDGE
WM. L. COWAN
JOHN COYLE
E. ALLEN CRAIG

AUGUST B. CROMER
W. EDWIN CROUCH
JAMES I. CROUT
EUGENE A. CROW
ARTHUR CROWLEY
FRED D. CROWLEY
J. W. CROWLEY
H. W. CRUSEY
COMMODORE CHARLES A. CUMMINS
CAPTAIN HAROLD M. CUMMINS
HON. WILLIAM CURRAN
COMMODORE ALLAN C. DAVIS
B. S. L. DAVIS
H. BRAITH DAVIS
FRANK W. DAWSON
GEORGE L. DEICHMANN, JR.
CAPTAIN JOHN S. DELANO
LLOYD HEMSLEY DENTON
DR. HARRY DIEBEL
C. REESE DIETRICH
ISAAC H. DIXON, JR.
HEREBERT K. DODSON
FREDERICK C. DOUTY, JR.
DR. SHEPHERD DRAIN
JAMES F. DOUTY, III
REAR COMMODORE JUSTUS DUNOTT
A. F. DYER
RAYMOND EADER
PAUL WILLIAM ECKERT
ROBERT S. EINSTEIN
F. B. EISENBRANDT
CURTIS H. ELLIOTT
DAVID L. ELLIOTT
THOMAS E. ELLIS
FRANK ELSNER
GEORGE H. EMERSON
BENNETT S. ENSOR
DR. CHARLES B. ENSOR
JOHN ERHARDT
WYATT W. ESTEP
W. R. EVITT
J. F. EWING
WINFIELD S. FAUNCE, SR.
JOHN FERRARA
J. WILLIAM FETTER
ROBERT B. FLEIGH
DR. PAUL NELSON FLEMING
GEORGE F. FLENTJE, JR.
NELSON FORD
W. MORRIS FULLER
ALFRED GALL
A. NORMAN GALLAGHER

A FEW RECENT DISPLAYS GIVEN
BY US

Cherry Blossom Festival, Washington, D.C.
Inauguration of President Roosevelt,
Garrison Blvd. Ashburton Celebration,
Baltimore, Md.
Patterson Park 4th of July Celebration,
Baltimore, Md.
National Air Races, New Orleans, La.
Seminole Sun Dance, West Palm Beach, Fla.
George Washington Celebration, Eustis, Fla.
General Pulaski Celebration, Baltimore, Md.
and hundreds of others too numerous to
mention

*The Worlds largest Manufacturers of Dis-
play Fireworks, Specializing in giving public
and private displays.*

**International Fireworks
Company**

40 Journal Square, Jersey City, N.J.
Factory: Fairview, N.J. John Serpico, *Pres.*

Plant: Mt. Winans Gilmore 1141

SUSQUEHANA ICE CO.

Car Icing Our Specialty

W. D. Waxter, Jr., *President*



Office:
103 DOVER STREET
Baltimore, Md.

Plaza 1295-1296

Telephone Curtis 0238

A. Smith & Sons
Shipyard

Two Electric Marine Railways

Commercial and Yacht Repairs

Yacht Storage — Marine Paints

CURTIS BAY, BALTIMORE, MD.

Compliments of

C. H. BRAUN & SONS, INC.

FAT, BONES, CRACKLINGS, TALLOW
AND GREASES

Gilmor 1542

2008 ONTARIO AVE. Baltimore, Md.

MEMBERSHIP—Continued

HAROLD W. GARDINER
 CAPTAIN W. EUGENE GARY
 ROLAND R. GEARY
 COMMODORE FREDERICK A. GEORGE
 WM. R. GERMAN
 MILTON GIESEN
 HARRY D. GLASER
 ARCHIE GLICKMAN
 COMMODORE C. GRECHT
 GEORGE GROVES
 HOWARD Y. HAFFNER
 ARTHUR G. HALL
 ROGER F. HALL
 WILLIAM N. HARDY
 WILLIAM E. HARRIS
 CHARLES E. HARRISON
 J. GODWIN HART
 EDWARD B. HARWOOD
 B. WOODWARD HAZEL
 SAMUEL M. HECHT
 FREDERICK H. HENNINGHAUSEN
 JAMES E. HICKS
 WILLIAM HOEHN
 EDWARD A. HOFFMEISTER
 CAPTAIN GEORGE S. HOKE
 MAJOR WM. E. HOKE
 ROBERT L. HOLMES
 EDWARD G. HOOPER
 G. PORTER HOUSTON
 JOHN R. HOLTHOUSE
 CANTWELL HOWARD
 A. L. HUBBARD, JR.
 HENRY F. HUBER
 M. F. HUMPHREY
 JOEL G. D. HUTZLER
 GEORGE W. HYDE
 M. B. INGRAM
 E. E. JACKSON, JR.
 CHARLES I. JAMIESON
 HOWARD O. JENKINS
 ARTHUR G. JENNINGS
 JAMES JENSEN
 CHARLES W. JOHNSON
 JOSEPH A. JONES
 RICHARD T. JONES
 C. W. JOSSELYN
 VICE COMM. C. MARKLAND KELLY
 W. WALLACE KEMP
 RICHARD F. KIEFFER
 WILLIAM H. KIRKWOOD
 ROBERT KIRKWOOD
 FREDERICK A. KLEIN
 FRED E. KLAPPROTH
 IRVING H. KOHN
 WALTER W. KOHN
 EDWARD KRESS, JR.
 JOSEPH KURDLE
 GEORGE KURTZ
 REAR-COMMODORE LEWIS W. LAKE
 COMMODORE WM. E. LAMBLE
 MAJOR LOUIS E. LAMBORN
 S. FERRY LAUCKS
 RICHARD C. LEATHERBEE
 WILLIAM F. LEHNERT, JR.
 JOHN R. LEMEN
 WILLIAM LEONHART
 H. R. LICKLE
 A. W. LEYSHON
 HARRY B. LITTLE
 J. V. LOBELL
 WILSON LOMAX
 CLYDE E. LOOSE
 CLIFTON I. LOWE
 JAMES STUART LOWRY
 H. V. LUCAS
 E. H. LUPTON
 OSCAR W. LUSBY
 JAMES D. MacBRIDE
 J. NEIL McCARDELL
 H. C. McCOMAS
 HERBERT E. McCULLOUGH
 SAMUEL MARKS
 R. W. MARSHECK
 RICHARD MARTIN
 WM. E. MARTIN
 JESSE H. MASON
 W. V. MASSON
 WILLIAM B. MATTHEWS
 THOMAS H. MEUSHAW
 JACK MEYERHOFF
 CLARENCE MICHAEL
 MARCUS H. MILES
 A. P. MILLER
 ASHLEY R. MILLER
 CHARLES W. MILLER
 JAMES HURST MILLER
 C. W. MILGSH
 RAYMOND L. MOORE
 CHARLES F. MITCHELL
 GEORGE B. MOORE
 TILGHMAN V. MORGAN
 R. G. MOWBRAY
 JOHN S. MURPHY
 CHESTER G. MYERS
 HESTER N. NAGLE
 ARTHUR NATANS
 JOHN NEERHOUT
 DR. J. THOMAS NELSON, JR.
 DR. JAMES W. NELSON
 JOHN W. NELSON
 CHARLES NEUBERT
 L. H. NEWARK
 E. T. NEWELL
 ARTHUR W. NORTON
 GEORGE G. NORWOOD
 VINCENT O'CONNOR
 JOHN Y. OFFUTT
 HARRY OGDEN
 EDWARD F. ORTMAN
 C. H. OSBORNE
 ARTHUR R. PADGETT
 HENRY PEACH
 H. CLAYTON PEDDICORD
 JAMES S. PENNINGTON
 HON. PHILIP PERLMAN
 CHARLES L. PERRY
 PRESTON PETRE
 COLONEL ALBANUS PHILLIPS
 LEVI B. PHILLIPS
 THEODORE J. PHILLIPS
 REV. JOHN W. PITCHER
 LOUIS I. PLACK
 JAMES R. PLOWMAN, JR.
 SIDNEY W. PORTER
 COMMANDER D. L. PRIMROSE
 HERBERT W. QUARTERLY, JR.
 ANTHONY RAKOWSKY
 GEORGE W. RAPPELEYEA
 WILLIAM T. RATCLIFF
 FRANK H. REAGAN
 HARVEY E. REANEY
 CHARLES P. RECKNER
 W. CARROLL REDMAN
 D. MEREDITH REESE
 DR. FIELDING REID
 A. H. REIFSCHEIDER
 CHARLES G. REIGNER
 HAL K. REYNOLDS
 ALBERT W. RHINE
 JOSEPH H. RICE
 FRANK RIPPLE
 REV. LEONARD J. RIPPLE
 ROBERT B. RIVES
 CAPTAIN MILTON ROBERTS
 ROY E. ROBERTS
 RALPH J. ROBINSON
 STUART G. ROBINSON
 LEE P. ROCK
 CHARLES J. RODGERS
 H. BEALE ROLLINS
 ALMAN THOMAS ROSS
 RAYMON T. ROSS
 JOHN NELSON ROTH
 S. H. ROTHROCK
 JOHN S. ROWAN
 HARRY M. SACHS
 FRED. C. SCHANBERGER, JR.
 CHARLES H. SCHEID
 WM. F. SCHLUDERBERG
 HENRY H. SEABROOK
 GEORGE SELLMAYER
 DR. LAWRENCE M. SERRA
 STEPHEN SETH
 WILLIAM B. SETTLE
 JOHN W. SHERWOOD
 N. H. SHILLMAN
 WILLIAM F. SHINNICK, JR.
 EDWARD T. SHIPLEY
 W. BENTON SHIPLEY
 WILLIAM SHIRLEY
 EDWIN F. SHRIVER
 EARL SIMPSON
 BRUCE C. SIMPSON
 WILLIAM A. SINCLAIR
 RAYMOND A. SINSKEY
 CAPTAIN MAURICE E. SKINNER, JR.
 COMMODORE CARLTON M. SLAGLE
 GEORGE SMITH
 H. WEBSTER SMITH
 WILMER T. SMITH
 ALFRED F. SNYDER
 MAURICE SOPHER
 EDWIN M. SPENCE
 WILLIAM R. SPICER
 W. R. SPRULL
 WALTER S. STAPLER
 B. HARRY STATTER
 JAMES S. STENERSEN
 CHARLES F. STEIN
 ROBERT S. J. STEUART
 R. N. STEVENS
 F. M. STEVENSON

C. & P. Phones:
(Long Distance) Wolfe 1703-04

Electric Welding

Spedden Shipbuilding Co., Inc.

*Marine Railway
Wood and Iron Shipbuilders*

*Machine and Boiler Works
Brass and Iron Foundry
Coppersmiths, Plumbers, Carpenters
Caulkers and Joiners*

Night Phones:
Plant 5 P.M. to 8.30 A.M.
Saturday after 1 P.M. Wolfe 1705

Residences: University 0095
Forest 5914-W - South 2043

Boston St. and Kenwood Ave.
BALTIMORE, MD.

OXFORD SHIP YARDS Inc.

Tred Avon River at Oxford, Md.

*Building - Conditioning
Repairing*

STORAGE A SPECIALTY

Yachts Up to 100 feet long
12 foot Draft

J. RAMSEY SPEER, JR., Secy. and Treas.
Telephone Oxford 2261 Established 1866

THE ARUNDEL CORPORATION

BALTIMORE, MD.

Constructors and Engineers

and

Distributors of

SAND,
GRAVEL and
COMMERCIAL
SLAG

Hyde Propellers

Reverse Gears

MAHON & GALL, Inc.

Marine Engines

Kermath Universal Gray
Service

Universal Joints Engine Accessories

New Location
104 E. PRATT ST.
(One Door East of Light St.)

BALTIMORE, MD.

Phone—PLAZA 3777

MEMBERSHIP—Continued

ROBERT R. STIGLER
C. WARNER STORK
J. WILLIAM STRUVEN
J. WILLIAM STRUVEN, JR.
WM. J. TAYLOR, JR.
DR. J. WALKER THOMAS
J. WILLIAM THOMAS
RANDOLPH THOMAS
WALTER THOMAS
CAPTAIN HARRY G. THOMPSON
O. L. TEIDEMAN
C. WYATT TIFFNAY
ROBERT B. TOWILL
STANLEY B. TROTT
W. B. TULL
HOMER TURNER
WILLIAM C. TYLER
JOS. R. TYRRELL
WILLIAM VARNEY
P. IRVIN VOLK
N. VON KEASBORG
JULIUS M. WAGNER
ROBERT WAHAB
CLARENCE L. WALKER, JR.
DR. WILLIAM WALLACE WALKER
CHARLES WALLACE
HENRY WARD
F. HOWARD WARE
DR. CLAUDE A. WARNER
J. LEWIS WARNER
EDWARD E. WARREN
JOHN K. WASHBURN
GEORGE H. WATERS
HENRY R. WATKINS

ROBERT W. WAYLAND
R. LEGARE WEBB
FRED WEBER
E. P. WEEDON, SR.
FRANCIS A. WEISKITTLE
LOUIS WEISS
LLOYD S. WEITZEL
ALFRED E. WELCH
WILLIAM E. WELLMANN, SR.
J. BERNARD WELLS
JAMES W. WESTCOTT
DR. C. B. WHELTLE
CHESTER G. WHITE
WILLIAM M. WHITE
JAMES A. WHITTHURST
HARRY E. WHITLOCK
M. D. WILLIAMSON
ROGER WILLIAMSON
GEORGE B. WILSON
H. D. R. WILSON
WILSON W. WINBGLER
W. GEORGE WITTIG
J. WALTER WOOD
A. E. WOODY
DR. HAROLD E. WRIGHT
EDWARD J. WUNDER
HOWARD E. YOUNG
HUGH HAMPTON YOUNG, M.D.
JOSEPH L. YOUNG
WILSON YOUNGLOVE
GEORGE E. ZEPP
MARTIN I. ZIMMERMAN
GEORGE R. ZORN

WOMEN MEMBERS

MRS. LIONEL ATWILL

NON-RESIDENT

J. ROSE ANDERSON
J. W. ANDERSON
WILLIAM A. BEAZLEY
JOHN C. BENNETT
ROBERT BLY
HARRY BRAUNSTEIN
IRWIN CHASE
HARRY P. M. CONNOR
CHARLES P. CRANE
PROFESSOR J. W. CROSLEY
J. WELLINGTON COWLEY
COMMANDER L. C. DAVIS
CARL J. DOEDERLEIN
VICTOR F. EMERSON
VICTOR LEE EMERSON
GEORGE F. ESSLINGER
WALTER W. FRAZEE
LIEUT. GEORGE G. GARTON
IVAN E. GARVER
JOSEPH W. GIMPER
PAUL B. GOTTSCHALL
MAHLON N. HAINES
E. F. HOFFMAN
COMMODORE FRED. A. HOFFMAN
L. B. HUNTINGTON
DR. J. P. JETER
E. G. KALTENBACH
ROBERT C. KITCHEN
CARROL KLOTZBACH

A. S. KRATZ
WM. E. KARL LEUBBERS
S. C. LOVELAND
STERLING McKITTRICK
COLBERT McCLAIN
GEORGE A. MILLER
R. HARE MULFORD
JOHN I. OESCHLE
CLAUDE G. OUSEY
CHARLES J. OWENS
LT. COMMODORE DANIEL P. PLATT
PLEASANT L. REED
J. CHARLES ROEMER
DR. HARRY A. ROTHROCK
ENOS L. SEEDS
J. BARTOL SILVER
D. STAITER
WYNNE A. STEVENS
HERBERT G. STOCKWELL
CHARLES D. STRADLEY
B. MILTON STRADLEY
W. W. STRUTHERS
R. LIVINGSTON SULLIVAN
JOHN CHARLES THOMAS
J. H. VAN SCIVER
W. W. VAUGHN
HAROLD E. WEST
FRANK K. WILLMAN

ASSOCIATE MEMBERS

CAPTAIN H. ALMY
EDWARD D. BECKER
W. F. COURTS
PETER C. CAMBLISS
H. LOWERY COOLING
CAPTAIN HAROLD KING

AUGUST J. LOESER
FRANK RUCK
M. SOLMSON
JAMES E. VAN EVERA
COMMODORE JOHN WERNER
LT. COMMODORE S. S. YEANDLE





Wachapreague, E. S., Va. (ocean side) via Del-Mar-Va. express or concrete. Good eats. Perfectly ventilated rooms. 36 connecting baths. Good boats with cabins, toilets, awnings, chairs. Fishing tackle, all kinds (sale or hire). Rain suits complete. Booklets.
A. H. G. Mears (Ownership Management)

South 1894 Yacht Work A Specialty

S. Marks Boat and Engine Co.
 (Electric Marine Railway)

SALES AND SERVICE ALL MAKE OF BOATS AND MOTORS
 N. E. Corner Hanover St. Bridge, Baltimore, Md.

PLAZA 0955 UNIFORM CAPS

Baltimore Uniform Cap Mfg. Co.

COR. BALTIMORE & LIBERTY STS.
 Mrs. S. Raichlen Baltimore, Md.

LATHROP AND RED WING OIL AND GAS ENGINES

F. B. EISENBRANDT

FOOT OF LIGHT STREET OPPOSITE THE CLUB

Yard Elliott & Linwood Ave. Office, 2901 Elliott St.
 Timber Yard Boston & Potomac Sts., Canton

P. M. Womble Lumber Co., Inc.

YELLOW PINE AND FIR TIMBER
 BALTIMORE, MD.

Compliments of
DR. SHEPHERD DRAIN

SEND IT TO THE LAUNDRY
 —THEY DO IT BEST

Compliments of
PAUL ECKERT

Compliments of
A. S. KRATZ
 Richmond, Virginia

Compliments of
JOHNSON LUMBER COMPANY
 Annapolis, Md.

Vernon 3592

Vernon 3593

WM. JACOBS & SONS

Incorporated

QUALITY SEAFOOD Prompt Deliveries

411-413 NORTH PACA STREET Baltimore, Md.

THE HIRSHBERG COMPANY

ARTISTS' AND ENGINEERS' SUPPLIES
 DRAWING MATERIALS

214 W. FRANKLIN ST. BALTIMORE, MD.

"Plated Right Mirror Bright" PLAZA 7413
 Cadmium, Nickel, Copper, Silver, Gold Plating

MARYLAND PLATING CO.

CHROMIUM PLATING AUTO PARTS REFINISHED
 A. Borleis All Work Guaranteed
 316 N. HOLLIDAY STREET Baltimore, Md.

CALVERT 4435

A. POLLACK

Manufacturer of
 Army, Navy and Yacht Caps
 N. W. Cor. Baltimore and Harrison Sts.
 Entrance No. 6 Harrison St., 2nd floor Balto., Md.

GILMOR 0474

C. O. WURZBERGER & SONS

Manufacturers of Special Mill and Cabinet Work
 Annapolis Ave. and W.M.R.R. Baltimore, Md.

GENERAL ELEVATOR CO.

GEORGE R. ZORN

Member of Chamber of Commerce of the United States

**The National Window & Office
 Cleaning Company**

GENERAL CLEANERS
 105 E. PLEASANT ST.

Phone, Calvert 3699 Parts New and Used

Columbia Auto Parts Co., Inc.

Office and Warehouse—312-314 S. PACA STREET
 Baltimore, Md.
 FIRE ENGINES MARINE ENGINES
 TRUCKS BOUGHT AND SOLD

Phone, South 1530 LENIE ROWES

ANCHOR INN

SEA FOOD DINNERS
 215 DICKMAN STREET

COMPLIMENTS

Commissioner of Motor Vehicles

WALTER R. RUDY

« « THE FLEET » »

OCEAN GOING YACHTS

ADROIT, <i>Steam</i>	Barron G. Collier	NEMEMOOHA, <i>Diesel</i>	Dr. Ellwood R. Kirby
ARLIS, <i>Diesel</i>	R. L. Sullivan	OCEANIA, <i>Diesel</i>	Donaldson Brown
FLORIDA, <i>Steam</i>	Barron Collier	RELLIMPA, <i>Diesel</i>	A. P. Miller

DECK HOUSE CRUISERS

ALHAMBRA III.....	H. O. Berryman	MOBLA.....	Samuel Hecht
ALSU.....	P. N. Fleming	NINNESCAH.....	Paul W. Eckert
AQUARIA II.....	A. S. Kratz	ORSABA.....	Roy E. Roberts
CLARELLA II.....	J. H. Van Sciver	PENGUIN.....	Arthur G. Jennings
DIXIE.....	Robert Barbour	PRISCILLA.....	Major Louis E. Lamborn
DRONE.....	L. B. Huntington	SAPPHIRE.....	Pleasant L. Reed
ELENA.....	George A. Miller	SONOMA.....	James S. Pennington
ENTERPRISE.....	J. C. Baum	UTOPIA.....	J. H. Van Sciver
FAYENNE.....	Everett E. Jackson	VIRGINIA LEE.....	Dr. L. M. Bennett
FLEET.....	C. Markland Kelly	VUELL II.....	Wm. A. Beasley
FLORA DEL MAR.....	Captain Harold O. Bixby, U.S.A.	WANDERER.....	Charles D. Stradley
FREDDIE B.....	Harry Braunstein	WESTHAVEN.....	Harold E. West
IVANHOE.....	Edward Booz	WILMER IV.....	Com. Cecil H. Bagley
MAMMY.....	Mrs. Lionel Atwill	WYOMING.....	Dr. H. R. Lickle
MARIADA.....	Col. Albanus Phillips		

CRUISING HOUSE BOATS

MASQUERADER.....	John Charles Thomas	THISTLE IV.....	George H. Emerson
------------------	---------------------	-----------------	-------------------

EXPRESS CRUISERS

ALNORJA.....	A. Norman Gallagher	LE MIEN.....	Robert B. Fleigh
ARLIS.....	R. L. Sullivan	OHBEE II.....	Stephen Seth
BESSIE R.....	John S. Rowan	RUJOPA.....	Raymond Lyon Sinskey
CRUSADER.....	W. Edwin Crouch	SEA BEE.....	W. C. Atkinson
HARMATTAN.....	Charles Mitchell	SERENE V.....	John W. Sherwood

BRIDGE DECK CRUISERS

ALHAMBRA IV.....	Com. C. Grecht	KISKI.....	J. B. Anderson
ALDON.....	D. L. Primrose	KITSENOY.....	Richard T. Jones
ALEQUIPPA.....	Edward Blum	KYRRAH.....	H. Webster Smith
ANNELLEN IV.....	Arthur R. Padgett	MAR-LE.....	Marcus H. Miles
ARLA.....	Philip Perlman	MARO.....	John J. Oechsle
BERNOMA.....	Dr. Charles B. Wheltle	MARY CHARLOTTE.....	Dr. J. Walker Thomas
BETTY JANE II.....	Henry F. Buettner, M.D.	MILEF.....	Frank and Leonard Ripple
BONITA.....	J. W. Crosley	MINGO.....	George A. Barnhart
CARLART.....	Arthur Nattans	MINNAKAY.....	J. W. Westcott
CHINOOK.....	Clarence H. Michel	MISS HATTIE.....	Henry T. Ward
CRUSADER.....	William R. Spicer	MOHAWK.....	E. J. Bray
ELF.....	C. Warner Stork	NANCY ELOISE.....	Ivan E. Garver
ELLAN RAN.....	Randolph Thomas	MALOHA.....	George Groves
FORRY.....	S. Forry Laucks	NANCY III.....	E. Stokes Sammons
FROLIC.....	Wm. E. Lamble	NOMAD.....	Arthur J. Blatchley
GITCHIE GUMEE.....	Charles F. Stein	NOPHONIA.....	Harry A. Rothrock, M.D.
GRAYLING.....	Dr. Theodore Cooke, Jr.	GEORGIA PEPPER.....	George E. Kurts
HAINES.....	Mahlon N. Haines	PAHU.....	H. Beale Rollins
HOWMAR.....	H. E. Young	REGIS II.....	H. C. McComas



**KING OF ALL
TABLE SYRUPS**

"Keep a Can in the Galley"

Claiborne-Annapolis-Matapeake Ferries

SAVE 100 MILES
SUMMER SCHEDULE
Effective May 28th, 1936

BETWEEN ANNAPOLIS AND MATAPEAKE

DAILY AND SUNDAY
Eastern Standard Time

Leave Annapolis	Leave Matapeake	Leave Annapolis	Leave Matapeake
7.25 A.M.	7.25 A.M.	2.00 P.M.	2.00 P.M.
8.00 A.M.	8.00 A.M.	3.00 P.M.	3.00 P.M.
9.00 A.M.	9.00 A.M.	4.00 P.M.	4.00 P.M.
10.00 A.M.	10.00 A.M.	5.00 P.M.	5.00 P.M.
11.00 A.M.	11.00 A.M.	6.00 P.M.	6.00 P.M.
12.00 noon	12.00 noon	7.00 P.M.	7.00 P.M.
1.00 P.M.	1.00 P.M.	8.00 P.M.	8.00 P.M.

BETWEEN ANNAPOLIS AND CLAIBORNE

Leave Annapolis	(Daily and Sunday)	Leave Claiborne
9.30 A.M.	(Week Days)	7.30 A.M.
5.30 P.M.	(Sunday only)	3.30 P.M.
8.30 P.M.		6.30 P.M.

THE CLAIBORNE-ANNAPOLIS FERRY COMPANY
Annapolis, Maryland

PALMER and BUDA

*Marine Engines
Gasoline and Diesel*

Marine Equipment and Accessories

Write for FREE Booklet, How the U. S. Navy Determined its Diesel Engine Requirements For Ships Boats.

WILLARD B. TULL

(New Location) PRATT AND GAY STS.
CALVERT 1633 BALTIMORE, MD.

LUMBER

*Specializing on Boat Materials, Marine
Hardware and Paints, Cabinet Work*

Dinghies and Sail Boats

JNO. H. GEIS & CO., Inc.

South End Hanover St. Bridge

Phone CURTIS 0800

When You Think of Medicine, Think of
James R. Plowman & Son
Pharmacists

Belair Road and Valley View Ave.

Handling Only
the Best

Prescriptions
Carefully Compounded

We Carry a Full Line of
DRUGS - RUBBER GOODS - CIGARS, ETC.
The Best Cost No More

Studebaker

Pierce-Arrow

Motor Cars

"Certified Used Cars"

5-DAY TRIAL

30-DAY GUARANTEE

BOB FLEIGH, Inc.

Mt. Royal Ave. and McMechen St.
Baltimore, Md.

The Downtown Garage

208-216 WATER STREET
Between Calvert and South Sts.

Complete One-Stop Service

FIRESTONE TIRES AND TUBES
ACCESSORIES

STORAGE

By the Hour, Day, Week or Month

Plaza 1204

Plaza 1205

The Downtown Garage

BALTIMORE, MD.

Just as an ocean liner, active yachtmen require and demand an accurate Compass. E. SMOLA COMPANY INC., supported by the *Directional Laboratory* offer you their services at a reasonable cost. Compass adjustment is truly an economical form of insurance.

E. SMOLA COMPANY, INC.

43 South Gay Street

Plaza 2934

Baltimore, Maryland

BRIDGE DECK CRUISERS, *Continued*

REX II	Charles P. Reckner	TONKAWA	J. Miller Stradley
RICCI	Lionel Atwill	UNDINE	Richard F. Kieffer
RODMAN II	Ashley R. Miller	VIRGINIAN	Robert B. Rives
SEA HAWK	Lewis W. Lake	VALKYRIE	Dr. Oscar W. Lusby
SAN TAD	Isaac Dixon	WALVIRLOU	W. Wallace Kemp
SCORPION	William Curran	WAUKINA	Com. Justus Dunott
SIS GUY II	C. W. Milosh	WILDE	Robert P. Anderson
TAHOKA	Enos L. Seeds	WILVEN	M. J. Williamson

RAISED DECK CRUISERS

ALABI	Captain E. F. Shriver	LE PECHUR	John Charles Thomas
ANGELA	Sydney W. Porter	MAE	Walter Thomas
ANITANI	Herbert R. Smith	MARGARET	Harvey S. Bickel
BARBARIAN	C. W. Tiffnay	MAYFRANK	Frank K. Willmann
BILLIE ROGERS	J. Walter Wood	MICKEY N.	E. F. Hoffman
BLACK GOLD	Wm. F. Shinnick	MIRH-MAULL	Dr. J. P. Jeter
BLACK MARLIN	William E. Harris	NANCY	Paul Lane Ives
CAROLYN	George E. Harrison	NEPRO	John Erhardt
CATHERINE	Leo P. Rock	NOMAD	Eugene Crow
CHANCE	Charles E. Chance	OKAY	Raymond Eader
CHRISTIE	Almon Thomas Ross	POLLIWOG	Robert T. Bly
CHIDORA III	Herbert G. Stockwell	RAMBLER	N. H. Shillman
CHISELER	Edward F. Ortman	SEA DOG	Maurice Sopher
DAD	John Coyle	SARAH	H. B. Little
DAISY W	Harry E. Whitelock	SEA BIRD II	George E. Zepp
DEHMO	Comm. W. Tilghman Hemsley	SERENE III	Frances A. Weiskittle
DEMMA	J. Bernard Wells	SERENE IV	John W. Sherwood
DOLLY	A. E. Woodydy	SHOW BOAT	R. H. Mulford
DOOWRON	George G. Norwood	SKIPSEA	Henry E. Blake
DORICK	Com. Frederick A. Hoffman	TRIXIE	Hugh Andrews
FELICITY	Harold E. West	USONA	Harry G. Leland
FOUR GRACES	Wilmer A. Caskey	VAGABOND	H. Richard Watkins
FRANCES F	W. S. Faunce, Sr.	VIATOR	J. F. Ewing
GRAPAL	J. Goodwin Hart	VIKING	Harold W. Gardiner
GRAYLING II	Samuel Marks	VUEL II	William A. Beazley
HELEN	James Wm. Thomas	WA HA	R. S. Wahab
HI WA	H. C. Brooks	WEETU	Harris C. Brooks
JAYSEA	John R. Lemen	WENTWORTH	H. W. Quartley, Jr.
KOALA	W. B. Settle, M.D.	WHOOPEE	Joel G. D. Hutzler
LE CAMARA	Wilmer T. Smith	WUNDERBAR	Edward J. Wunder
LENORA	G. Hartman Blamberg		

SEDAN CRUISERS

CAROLINA	E. T. Newell
----------------	--------------

TRUNK CABIN CRUISERS

ALBEGE	Alfred F. Snyder	GOLDFISH	W. R. Boehme
BARBUZ	George F. Esslinger	HUBBARD	A. L. Hubbard
BILLY JR.	Wm. E. Martin, M.D.	JAVILE	Dr. James R. Plowman, Jr.
CAROLYN	James A. Whitehurst	JOAN	Frank Elsker
CATHERINE S.	F. Fielding Reid, M.D.	JO ANNE	Joseph H. Rice
CAYUGA	William M. White	KATHLEEN	Henry Peache
CELMAR	J. Neil McCardell	LEE	Earle Simpson
CORSAIR II	Walter W. Frazee	LEE	Levi B. Phillips
CYNARA	Roger F. Hall	LILLIAN CLARE	Wm. B. Matthews
DOLORES	Wm. F. Baker	LILLIAN V.	W. N. Hardy
EL-MAR	Theodore J. Phillips	LOUISE	C. Edwin Clarke
FLUER DE LYS	Dr. Claude A. Warner	MAMOR	W. M. Fuller
FULTON	C. H. Osborne	MARGARET E.	Herbert E. McCullough



Established 1870

"Custom Built"

Commercial Truck Bodies

200 BLOCK NORTH HAVEN STREET

Telephones Wolfe 7675-7676

Arbutus 313

Open Sundays

JOHN S. GITTINGS

Boat Motors - 4-6-8-12 Cylinders

Used Cars and Parts

"A Part For Every Car"

24 Hour Service

Gittings Auto Service

Washington Blvd. & Sulphur Spring Road

HALETHORPE, MD.

Best Wishes to the Members
of the

Maryland Yacht Club

from the

Baltimore Salvage Company

Vernon 8273

Robert Bosch Products

Stephen Seth & Company, Inc.

Automotive Electricians
& Carburetor Specialists

*We Specialize in "Tuning Up"
Marine Engines*

Distributor: MARVEL OIL

882-884 PARK AVENUE
cor. Howard Street
Baltimore, Md.

SAILING YACHTS

ANSAX	Fred E. Klaproth	ROWENA	Wm. Bertalan
ZOE	Fred Klaproth	SPARKLE	G. Wilson Younglove
BESS	J. R. Washburn	VINGT TROIS.....	Stanley B. Trott
EIGHT BELLS.....	Wm. G. Tyler	WEEGA	E. P. Weedon, Sr.
ELINOR	Maurice E. Skinner, Jr.	MICKIE	L. H. Newark
MAVIS	Louis R. Glavis		

STAR CLASS

ALBACORE	Stanley Trott	PORPOISE	Dr. James Nelson
AMBERJACK	Richard Martin	WHALE	William Harris
BASS	H. K. Dodson	TUNA	David Baker
GAR	Wm. B. Matthews		

MOTH CLASS

JAYCEE I.....	Charles W. Johnson	BRAT	Robert Wayland
JAYCEE II.....	Harry R. Christopher		

SNIPE CLASS

DELTA	Irving H. Kohn	PROPELLER CLUB.....	J. D. MacBride
-------------	----------------	---------------------	----------------

SEA SLEDS

SEA SLED.....R. C. Kitchin

HYDROPLANES

PEP II.....E. T. Chase

OUTBOARDS

LOUELLA	J. E. Bauer	MARY E.....	Wm. T. Ratcliff
CECO SIS	Captain Harold M. Cummins	MOW	R. G. Mowbray

OUTBOARD RACERS

PILOT	Samuel Marks	PENN VAN	Willard B. Tull
-------------	--------------	----------------	-----------------

HOUSE BOATS

MERENEL	D. Meredith Reese	SA SE.....	John B. Baker
---------------	-------------------	------------	---------------

CANOEES

BET	Harry G. Thompson	LYDIA	Captain Harold M. Cummins
JIBBY	Bennett S. Ensor	SANS SOUCI.....	Joseph R. Tyrrell

CANOEES—SAIL

AGGRAVATOR	Chester G. White	RENDEZVOUS	W. Eugene Gary
BLACK ARROW.....	Charles G. Reigner	SEA DOG.....	Maurice Sopher



FERRY to EASTERN SHORE BALTIMORE - LOVE POINT

Autos \$2.00—Including Driver

Daily	Daily	Daily
7.00 A.M.	3.00 P.M.	Except Saturday
10.00 A.M.	5.00 P.M.	9.00 P.M.

B. & E. R. R. Pier 5 Light Street

VERNON 4800

What Price Friends?

We all like to help our friends—but isn't it true that when a man buys Life Insurance he buys it not to please a friend, but to protect his family? Ask us about the programs prepared for your protection by the Metropolitan. They have features which explain why Metropolitan policies are such great favorites with foresighted folks.

George W. Bahlke, *Manager*
Metropolitan Life Insurance Co.
720 Munsey Building
Baltimore, Md.

Wm. A. Pramschufel

Phone Plaza 4021

SPARKS & CO.

Manufacturers of
Sails, Awnings, Tents, Flags,
and Canvas Articles
Of Every Description

Yacht Work A Specialty
216 LIGHT STREET (3rd floor)
Baltimore, Md.

Chesapeake Marine Railway Co.

E. ALLAN CRAIG, President

and

The Marine Engine & Boiler Co.

Ship Carpentering, Spar Making and Caulking
Yacht Building and Repairs

Yard No. 1—Philpot and Point Sts. Phone: Wolfe 1190
Yard No. 2—Key Highway & Covington St. Wolfe 1191
Machine Shop and Boiler Works: Philpot and Point Sts.

Phone: Wolfe 1190

FOUR MARINE RAILWAYS

Night Phone: Liberty 2609

BALTIMORE, MD.

Parts for all makes of Cars

ARBUTUS 632

AS NEAR AS YOUR PHONE

THE ORIGINAL

L. R. GITTINGS & SONS

Used Cars and Parts, Tires
. . Batteries and Bodies . .

A large assortment of Motors for Boats
of Every Description Always on Hand

FREE DELIVERY

NEVER CLOSED

Francis Avenue

Relay, Md.

Compliments of
**THE UNITED STATES
PRINTING AND
LITHOGRAPHING CO.**

F. W. SCHILPP

MARINE SURVEYOR

with Boston Insurance Company

Baltimore, Md.

Expert Appraiser and Examiner of
Yachts, Vessels, Hulls and Equipment

WEISS MOTOR CO.

Best Used Cars in Town

Lowest Prices and Terms

31 Mt. Royal Ave. cor. Maryland Ave.

Vernon 8578

TRUNK CABIN CRUISERS, *Continued*

MARY LOU.....	H. W. Crusey	SEA DOG.....	John Y. Offutt
MIMI.....	Comm. W. S. Lydecker	SEA HAG.....	M. B. Ingram
NELLIE.....	David L. Elliott	SELENE.....	Hal K. Reynolds
NEPTUNE.....	J. W. Crowley	SOLITUDE.....	Capt. Harold M. Cummins
NAKOMIS.....	B. W. James	STARDUST.....	James Stone Stenersen
NO NAME.....	James I. Crout	STELLA III.....	Charles G. Reigner
NO NAME.....	Walter Stapler	THREE STARS II.....	Dr. B. Woodward Hazel
OSPREY.....	M. F. Humphries	TOLOJO.....	Dr. J. Thomas Nelson, Jr.
PINAFORE.....	Tilghman Morgan	TYCHE.....	Robert W. Wayland
RAJAH.....	Dr. C. B. Ensor	VAGABOND.....	Geo. W. Rappleyea
RENRAW II.....	J. Lewis Warner	VAGABOND.....	James Stuart Lowry
REX.....	Charles P. Reckner	VANITY.....	C. H. Elliott
ROSALIE II.....	Victor Lee Emerson	VERNON.....	Dr. Shepherd Drain

DOUBLE CABIN CRUISERS

BETTY JO.....	Dr. James W. Nelson	MATTIE E.....	Colbert C. McClane
CAVALIER.....	J. V. Lobell	OSCEOLA.....	Rev. John W. Pitcher, D.D.
EDNA J.....	Howard O. Jenkins		

GLASS CABIN CRUISERS

ALVILDA J.....	James Jensen	MARDELVA.....	Harry B. Little
COMRADE II.....	Frederick A. Klein	MAR DOR.....	E. B. Bobzien
HELENE.....	Commander George F. Flenje, Jr.	NAMELESS.....	Fred. B. Eisenbrandt

RUNABOUTS

ARTIC TERN.....	Ernest Chase	PEGGY ANN.....	Paul Lane Ives
BEE-BEE-EL.....	G. Hartman Blamberg	PEP.....	E. T. Chase
BLUE PIGEON III.....	Richard Crane Leatherbee	RASCAL.....	W. Avery Sinclair
WILSON J. CARROLL.....	Wilson J. Carroll, Jr.	REDWING.....	Charles W. Johnson
CHARDON.....	Dr. G. L. Deichman, Jr.	RUNABOUT.....	Louis Weiss
FLOBO.....	Robert N. Stevens	SHEBA II.....	H. Clayton Peddicord
FRANCIS.....	John W. Sherwood	SILVAN HAROLD.....	M. Solmson
HEATHER.....	J. H. Van Sciver	SUSSIE.....	Henry T. Huber
LADY BALTIMORE.....	Mrs. Lionel Atwill	WILMER II.....	C. H. Bagley
MYNE.....	John Charles Thomas	WILMER III.....	C. H. Bagley
NELSON.....	Robert N. Stevens	SEA BIRD.....	George E. Zepp
PEANUT.....	John Y. Offutt		

OPEN LAUNCHES

EDYTHE.....	George B. Moore	NAVAJO.....	H. B. Little
HICKORY.....	H. B. Little		

AUXILIARIES

DIXIE.....	Stuart G. Robinson	MYRA.....	Louis Weiss
DOWITCHER.....	R. M. Stevenson	NANCY BELLE.....	Paul Lane Ives
HILDEGARDE S.....	Sterling McKittrick	NATALIE.....	Harry Sachs
LIBERTY.....	Charles P. Crane	RITA MAY.....	G. W. Gimper
LORETTA.....	Frank H. Reagan	SEVERN.....	Harry F. Ogden
MARAICHE.....	William Shirley	VAGABOND.....	S. C. Loveland
MARY.....	Otto L. Tiedeman	PABINEAU.....	Captain Milton Roberts
MIAH MAULL.....	Dr. J. P. Jeter	WANDERER.....	W. E. Evitt
MIGRANT.....	Charles Wallace	WANDERLUST.....	George B. Wilson
MONSOON.....	David B. Baker	ZARA.....	Frederick C. McCormack

AUXILIARY SAIL

ISABEL.....	Winfield Black	SIGNAL.....	William W. Varney
QUEEN ELIZABETH.....	B. S. L. Davis	TRINCULA.....	Count Nikolai Von Kaesborg
DON.....	B. H. Statter		

66% of the Marine Engine manufacturers in the United States recommend or endorse **Mobiloil Marine**. For best protection of these engines in cruisers, runabouts and outboards, follow their advice.

Mobiloil Marine is for sale at the pier of the Maryland Yacht Club—and by dealers wherever motor boats are used.

Mobiloil Marine

Socony - Vacuum Oil Co.

INCORPORATED

Compliments of
JOHN BRAMBLE

CUMMINGS TRANSFER
706 S. WILLIAM STREET

Telephone, South 0066

BALTIMORE, MD.

Telephone Tilghman 33
Avalon, Md. Claiborne, Md. Fairbank, Md. Wittman, Md.
McDaniel, Md. Sherwood, Md. Tilghman, Md.

We Cater To Truck Load Lots

PLAZA 7875

PLAZA 7876

THE WEANT PRESS, INC.

Advertising Layouts - Programs - Publications - Editions
Catalogues - Office Forms - Stationery

GAY AND WATER STREETS

BALTIMORE, MD.

Printers of Kedge Anchor

In Appreciation

THE Maryland Yacht Club wishes to express sincere appreciation to the United States Coast Guard, the Governor of Maryland, the Mayor of Baltimore, the Board of Estimates, the Board of Park Commissioners, the Association of Commerce, the News-Post and Sunday American, the Baltimore Sun, the Evening Sun, Commodore F. W. Kipp, Jr., the different Clubs and Civic Organizations and to our list of friends, who through their contributions have made our Star Spangled Banner Regatta possible.

It is regrettable that this list is incomplete at this time of going to press.

John Sherwood
Dr. B. W. Hazel
Paul Eckert
Thomas Meushaw
Dr. Henry Buettner
Edward Hanlon
James Van Evera
Charles A. Hook
George Barnhart
H. Howe
D. Meredith Reese
Frederick McCormack
Alman T. Ross
S. H. Rothrock
S. C. Loveland
G. Krug & Sons
Phillip Perlman
Wallace Kemp
H. Braith Davis
Alfred Snyder
Levi Phillips
C. Morton Loose
Commodore C. H. Bagley
Harold West
Randolph Thomas
George Flentje
Joseph A. Vaeth
John R. Washburn
Curtis Elliott
Patapsco Squadron, U.S.P.S.
Robert Anderson
G. H. Blamberg
Henry Watkins
James Walker
Rev. John Pitcher
Lee Meyers
H. R. D. Wilson
Colonel Hancock
E. J. Wunder

Leroy Nichols
John Brandau
W. Courts
Richard Baker
Arthur Nattans
Christian Grecht
J. V. Lobell
William Struven, Jr.
Hon. Howard W. Jackson
Commodore Lewis W. Lake
George Zepp
J. Walter Wood
Howard Jenkins
Dr. O. S. Lusby
Harry Leland
George R. Zorn
W. Morris Fuller
Charles Bichy
H. O. Berryman
Harry E. Whitlock
Earl Simpson
Forry Laucks
G. H. Blamberg
Dr. W. S. Lydecker
Robert Wahab
William R. German
John Nelson
Randolph Thomas
James Struven, Sr.
Edwin W. Crouch
Charles Reckner
Ashley R. Miller
Howard Jenkins
Charles A. Cummins
H. O. Bixby
A. H. Reifschneider
Edward R. Johnston
R. W. Marsheck

WM. KALB & SONS, Inc.

Dealers in
FLOUR, FEED, GRAIN, HAY, LIME AND CEMENT
Hardware, Paints, Glass, Oils, Etc.

Phone, Gilmore 0338 1129-1131 Washington Boulevard

ROBERT R. STIGLER

2807 SILVER HILL AVENUE

BOATS AND YACHTS COLONIAL CRUISERS

COMPLIMENTS OF

H. W. CRUSEY, Sales Agent

THE NATIONAL CASH REGISTER CO.
600 N. Howard Street
MARYLAND SALES - SUPPLIES - SERVICE

Phone, Vernon 6777

AIR CONDITIONING, INC.

Distributors
CARRIER, Weathermakers to the World

1123 N. CHARLES STREET Baltimore, Md.

Compliments of

H. H. ROBERTSON CO.

Building Products World Wide Building Service
General Offices: Pittsburgh, U.S.A.
J. G. BAUERNSCHMIDT, District Manager
1635 Baltimore Trust Building

ELTO EVINRUDE JOHNSON CAILLE
JENKINS GARAGE
AND MARINE MOTOR SALES
Outboard Motor Sales and Service
329 N. CALVERT STREET Baltimore, Md.
Phone, Calvert 4689 Parts For All Makes

IF IT IS MADE OF CANVAS

CONSULT

ALBERT HAMLIN

123 W. PRATT STREET BALTIMORE, MD.

WALLACE & GALE CO.

Home Insulation — Radiator Enclosures
115 S. GAY STREET PLAZA 6385
W. W. Winbigler

CHINA GLASS SILVER

THE JOHN HOOS COMPANY

Hotel and Restaurant Equipment
Yachting Supplies

366-10 HANOVER STREET BALTIMORE, MD.

L. M. Funk Phone, Vernon 7134 Chas. M. Ennis

FUNK & ENNIS INC.

Distributors
CHRYSLER AND PLYMOUTH MOTOR CARS
Sales and Service 1309-11 Cathedral Street
Used Cars of Quality : Expert Repairing
Cars Washed and Polished

P. F. O. FEEDS

DEPENDABLE

SINCE 1865

P. FRED'K OBRECHT & SON Baltimore, Md.

Albert H. League Phone, PLAZA 2148

LEAGUE LUMBER CO.

LUMBER AND MILLWORK - BUILDING MATERIALS
Pier 6 Pratt Street Baltimore, Md.
Lumber - All Kinds - Any Quantity

Phones, Vernon 2763-2764 Ralph P. Milburn

THE GARDENS BLUE PRINT AND PHOTO-PRINT CO.

BLUE PRINTS AND PHOTOSTATS
419 ST. PAUL PLACE BALTIMORE, MD.

SABOCO PUMP CO.

Distributors for
MYERS HAND AND POWER PUMPS
also
BURKE'S SUPER TURBINE PUMPS
Pump and Well Supplies
121 LIGHT STREET Baltimore, Md.
Phone, Calvert 4918

Dodge and Plymouth Cars and Commercial Vehicles

KOLPACK & MITCHELL

Sales and Service Station
CHASE STREET AND GUILFORD AVENUE.
VERNON 0670 VERNON 0670

SOPHER CIGAR CO.

Distributors of HAVANA CIGARS
PIPES TOBACOS
PRATT AND CHARLES STREETS BALTIMORE

Phone, South 1681-J COPPER PAINT AND PAINTS

FRANK BOHLE & SON

MARINE RAILWAYS
Repair Work A Specialty Motor Boat Supplies
Complete Machine Shop—City End, Hanover Street Bridge
Agents: Scripps Engines—Sales and Service

Established 1843
Norman James, President L. Allan Dill, Vice-President

THE JAMES LUMBER CO.

BALTIMORE
Office, Yards and Planing Mill—921 ALICEANNA STREET
Corner Exeter Street
TELEPHONE PLAZA 7870

GEO. A. BARNHART

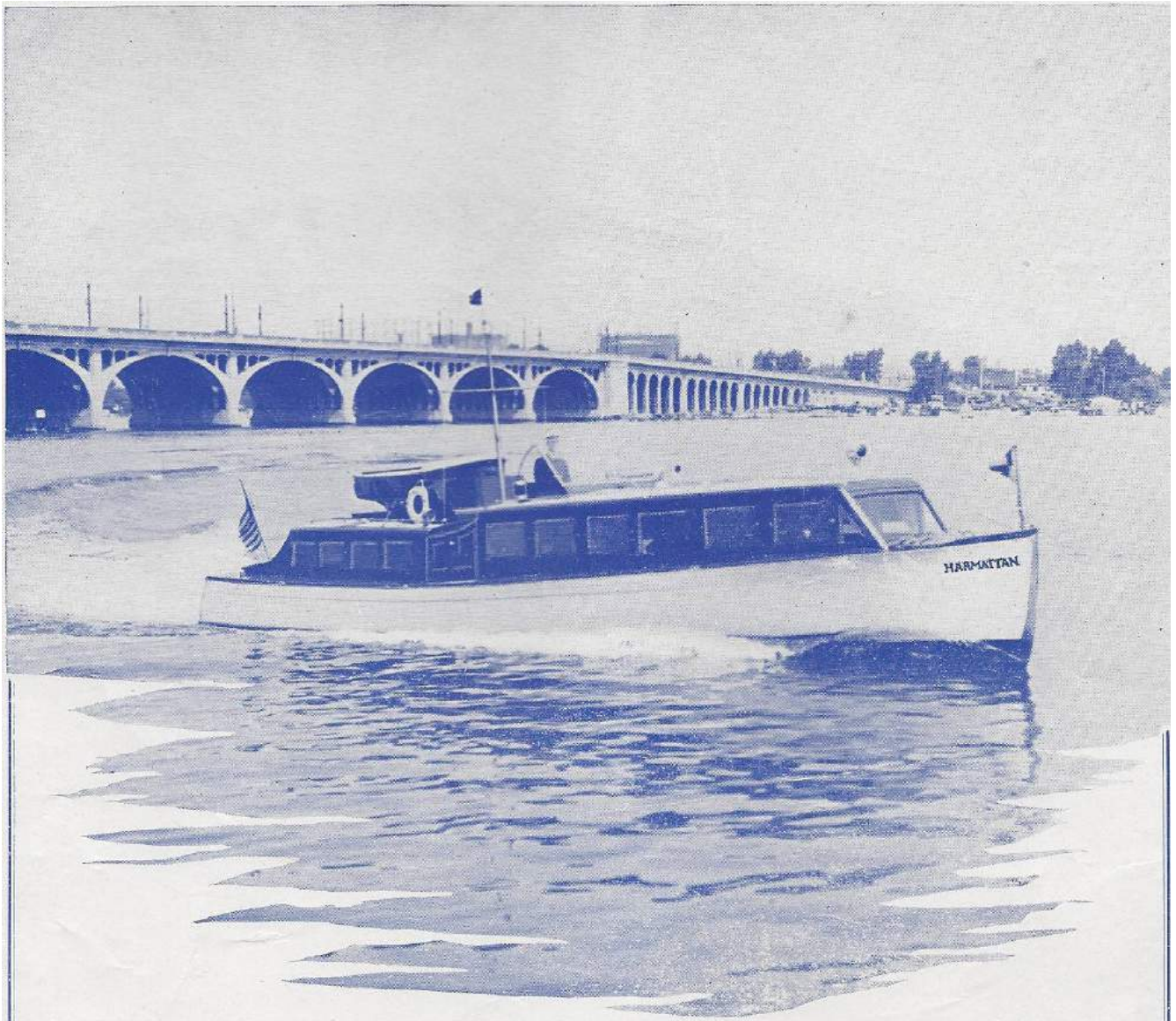
PLUMBING — HEATING — TINNING

1103 W. SARATOGA ST. GILMOR 5314

Telephone: Plaza 4207 Night Phone: Hamilton 2103

Captains Ship Chandlery Co., Inc.

810 East Pratt Street, Facing Pier 4, Baltimore, Md.
SHIP CHANDLERS AND GROCERS
Gasoline, Fuel Oil, Motor Oil and Water Promptly Delivered
from Power Boats
ALICE VIRGINIA and HELEN LOUISE
A. M. PAYNE, Mgr. L. L. BANK, Secy.



*Complete Laundry and Dry Cleaning Service
for the Home - for the Yacht*

Phone MADISON 2752

REGAL THE SOFT WATER **LAUNDRY**

REGAL - ZORIC DRY CLEANERS

Main Office and Plants GILMOR and MOSHER STS. Baltimore, Md.

"Buick's
the
Buy"

KELLY
BUICK
CHARLES STREET
at
MOUNT ROYAL

C. Markland Kelly, *President*

VERNON 2800

Order **Bismarck BEER** at the Bar - - -

You'll take a case Aboard!

Old German Beer brewed by a Traditional German Brewmaster—that's Bismarck Beer.

More than a half-century ago, the Neumeister family began brewing true German style Beers in Baltimore. It was they, more than any others, who won for Baltimore its honorable name in the Brewing Art. And now—two and one-half years after the return of Beer—it is "Neumeister" who is re-establishing the old Baltimore tradition.

Discriminating Baltimoreans are quick to recognize superlative quality in Beer. Their reception of Bismarck Beer has been most gratifying. Take a case of Bismarck on board today.



Bismarck Brewing Corp.

1838 N. Patterson Park Avenue . . . Baltimore, Md.

BROADWAY 0700

June 9, 2006

Maryland Yacht Club
1500 Fairview Beach Rd
Pasadena, MD 21122

I spoke to a lady in your office today about the enclosed program for your "Star Spangled Banner Regatta" in 1936.

My late father-in-law, Albert H. Reifschneider was an active member of the Club, and was Commodore in, I believe, 1939. I recently found the program while going through some old files.

I hope it will be an interesting addition to your archives as you celebrate the 70th anniversary of that regatta,

William H, Fisher
6639 Walnutwood Circle
Baltimore, MD 21212